

EU Energy Efficiency Directive Updates and CHP support mechanisms in Europe

11 April 2019
10th Energy Efficiency Forum & Exhibition, Turkey

François Paquet
COGEN Europe



COGEN

EUROPE The European Association
for the Promotion of Cogeneration

Our Mission

Cross-sectoral voice of the cogeneration industry.

Work with EU Institutions and stakeholders to shape better policies by:



**BUILDING A
ROBUST EVIDENCE-
BASE
DEMONSTRATING
THE BENEFITS OF
COGENERATION**



**USING THE
EXPERTISE OF
OUR
MEMBERSHIP**



**ESTABLISHING
STRONG
COALITIONS
AND
PARTNERSHIPS**

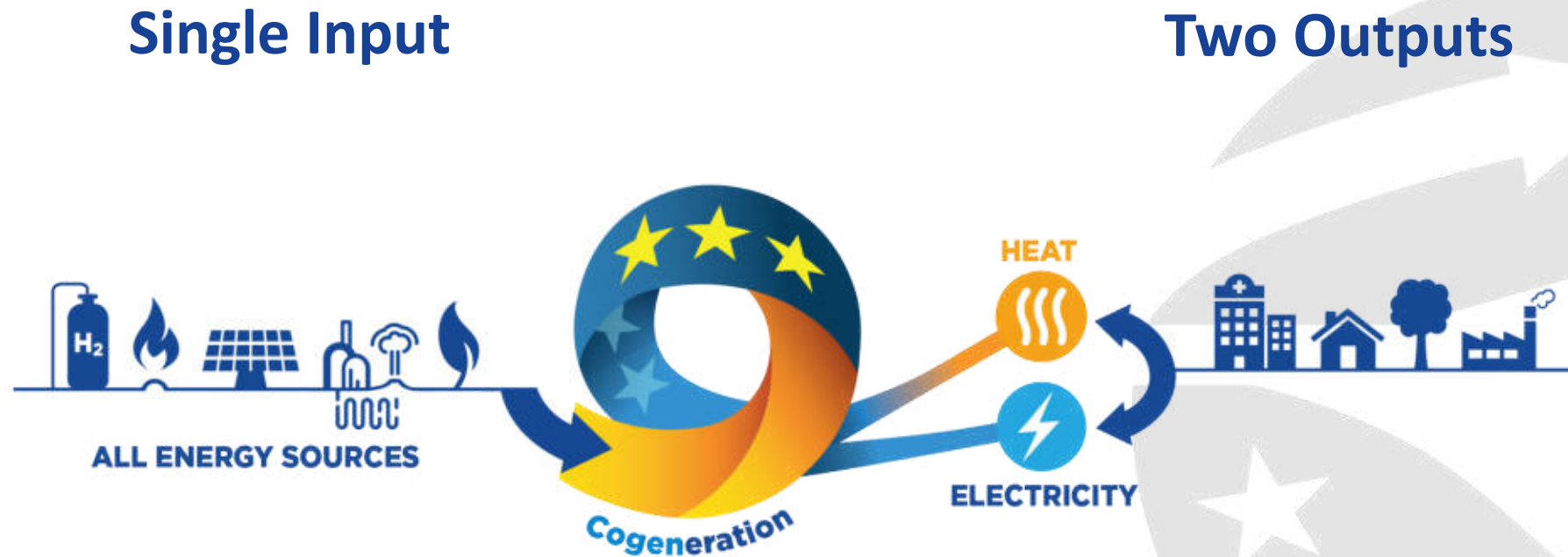
Our Members

National Members
(representing over 70% of
CHP capacity in Europe)

Corporate Members
(covering the entire
energy value chain)

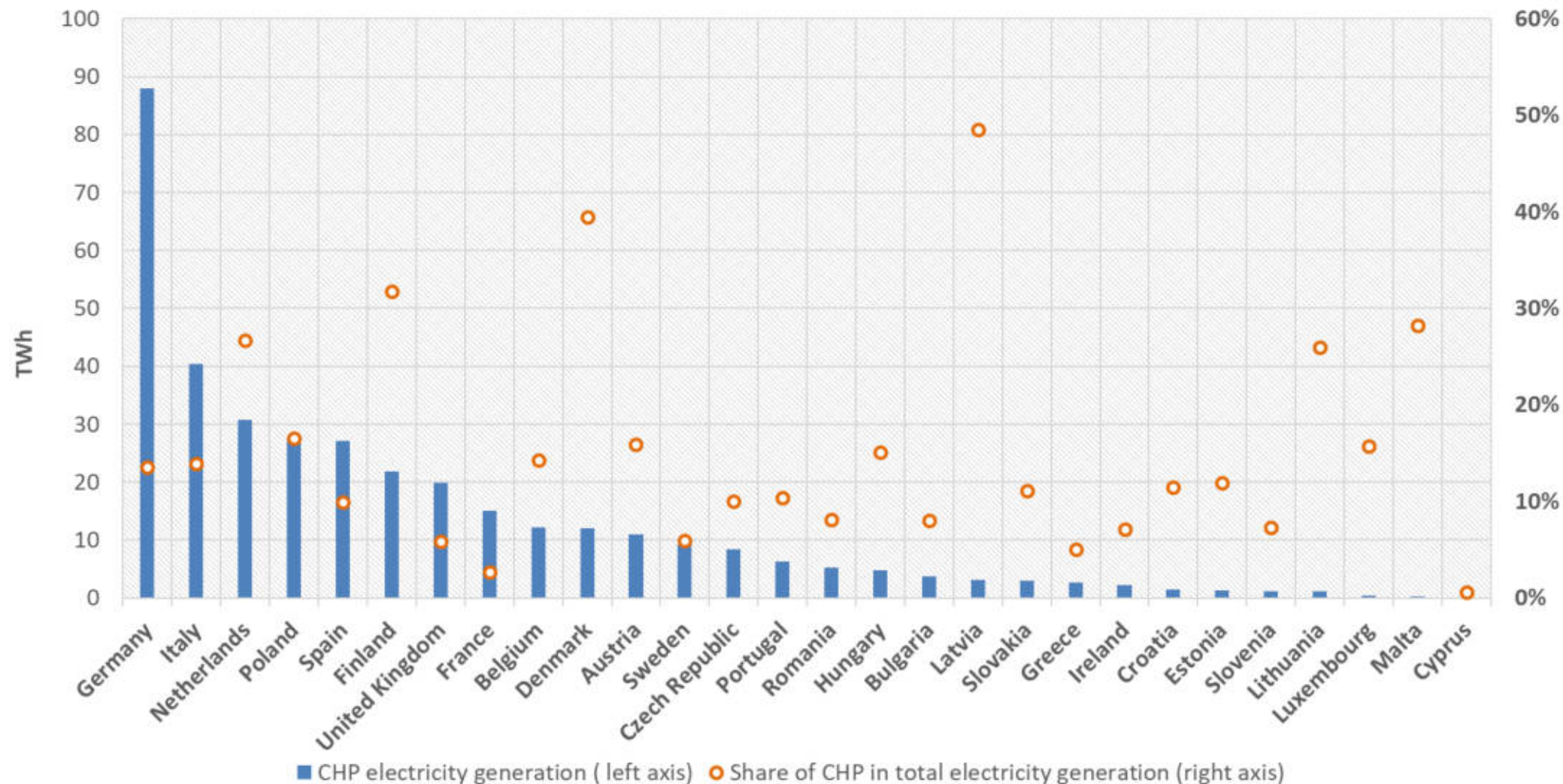


Cogeneration – making the most out of energy



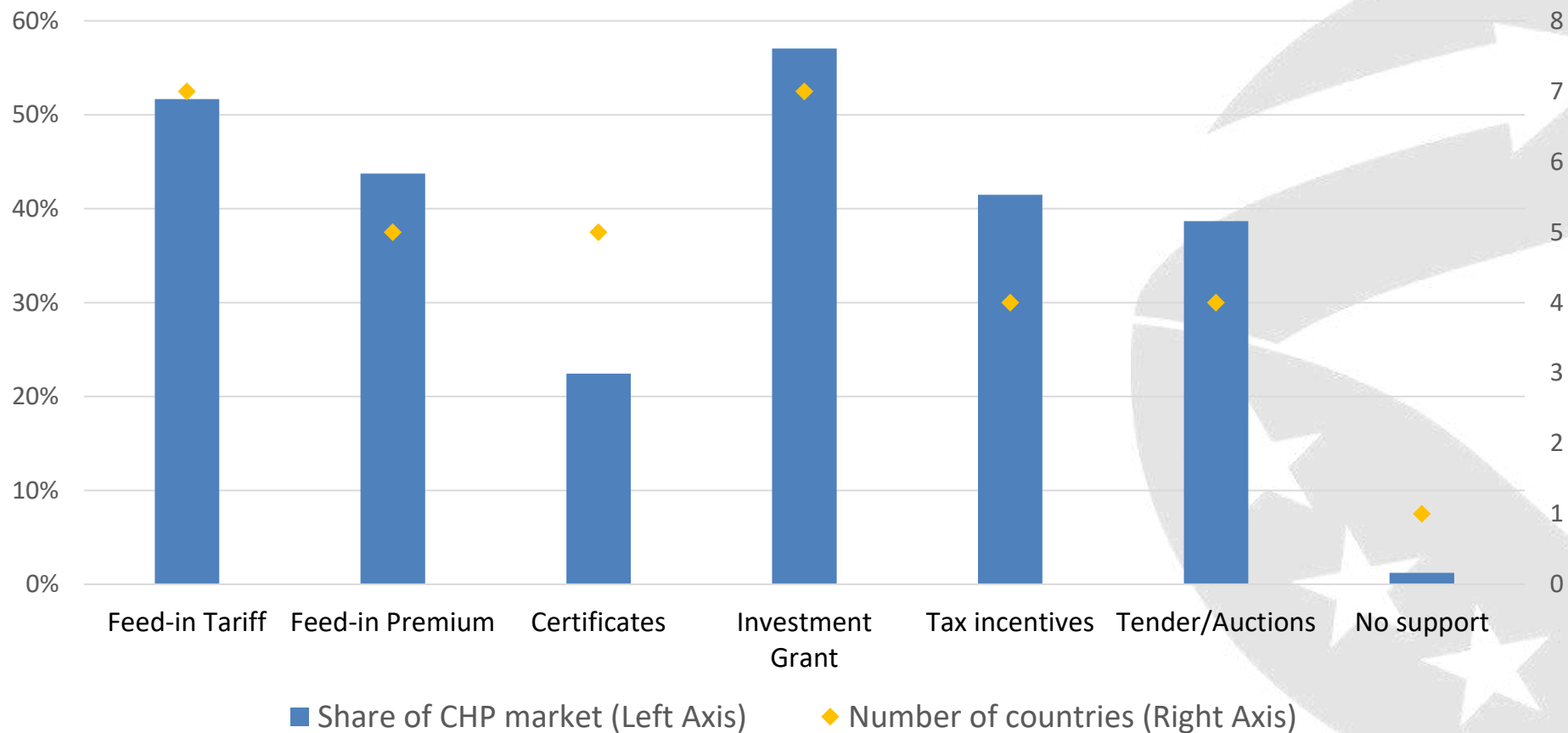
Cogeneration transforms +90% of the energy into useful heat and electricity for factories, offices, public buildings and homes.

Cogeneration today across Europe (2016)



Available Support for CHP in 2018

EU28 & Turkey



Revised Energy Efficiency Directive (EED)

- **New EU efficiency target of 32.5 %** (with possible revision upward as of 2023)
- **Revised energy saving obligations → Reducing annual energy sales by 0,8%**
 - Obligation focus on final energy savings. No focus on on-site CHP savings
- **Revised EU default Primary Energy Factor for electricity at 2,1 (2.5 today),**
 - Average EU PEF less appropriate for heating
 - To be revised every 4 years based upon actual observed data
 - Member States may apply different coefficient taking into account their own energy mix

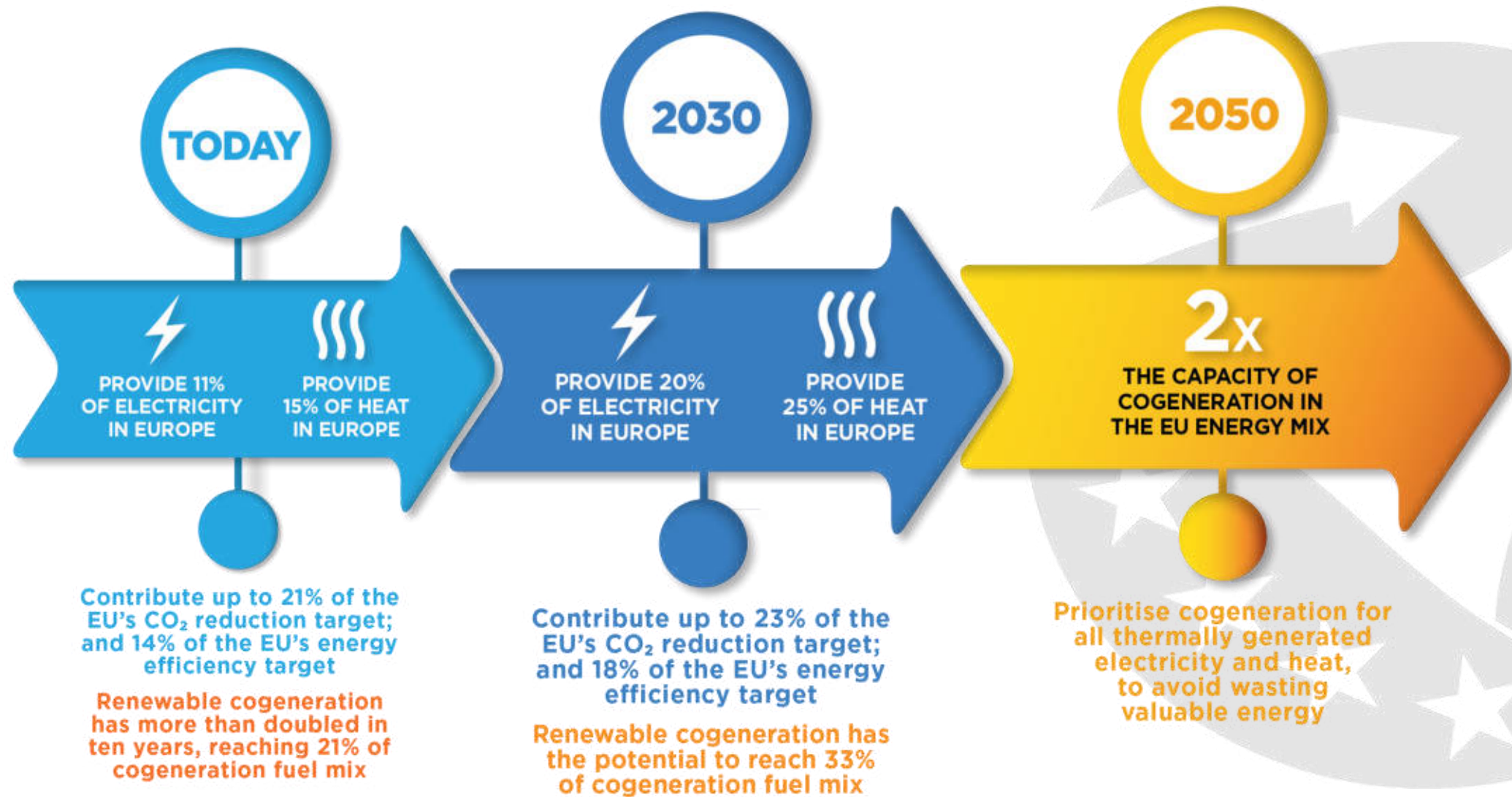
Key cogeneration article not part of EED revision...

Article 14

Members States to

- **Carry out Comprehensive Assessments (CA) on potential for high efficiency (HE) CHP and District Heating & Cooling by 31 December 2015**
 - Updated every 5 years at the request of the Commission
 - next CA in 31 Dec 2020
 - **Based on revised Annex VIII !**
- **Perform cost-benefit analysis** of efficient heating & cooling
- **Adopt policies** to realise the potential identified in CA when benefits exceed costs

Cogeneration Delivers Today and has Potential to Further Grow



Prerequisites for CHP Growth

- Ambitious legislation and implementation for efficiency in energy supply;
- Apply energy efficiency in generation, transmission, distribution and consumption;
- A favourable and stable policy environment, with strong investment signals (incl. via support schemes) and no retroactive changes;
 - Adapted to potential and needs of CHP market segments
- Security of heat supply and dedicated approach to heat taking into the various needs of energy users (industry, SMEs, public buildings, households)
- Better awareness of CHP technologies towards all players of the energy value chain

Annual Conference & Gala Awards Dinner

24 – 25 October 2019
Madrid, Spain

***“Cogeneration:
Efficient and Clean
Heat and Power for
Europe’s
Sustainable Energy
Future”***

www.thepowerofheat.eu



Overview of Topics

SESSION 1: European Policy

SESSION 2: Industry and Market

SESSION 3: Vision of Politicians and Regional Authorities

SESSION 4: Vision of Institutions

SESSION 5: Cogeneration Trends and Market Outlook

Hans Korteweg
Managing Director – COGEN Europe
E-mail: hans.korteweg@cogeneurope.eu
Phone: +32 (0)2 772 82 90
Website: www.cogeneurope.eu
Twitter: @CogenEurope

COGEN Europe • The European Association for the Promotion of Cogeneration
Avenue des Arts 3-4-5, 1210 Brussels, Belgium • T +32 (0)2 772 82 90 F +32 (0)2 772 50 44 info@cogeneurope.eu • www.cogeneurope.eu

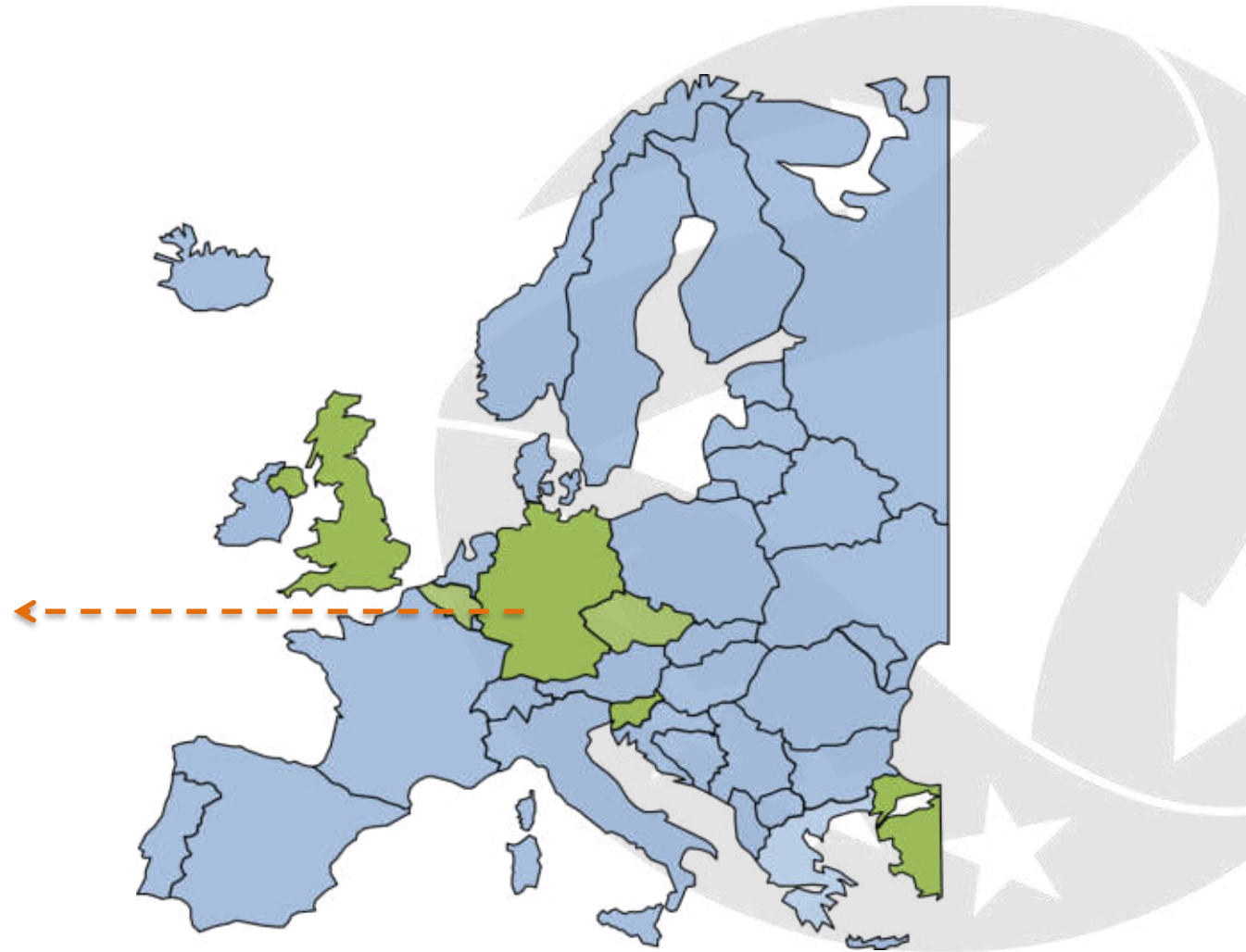


Allemagne

KFW433

KFW433

- Period: **started in 2016**
- **German NOW NIP grant scheme** administered by KfW bank
- Beneficiaries: **End customers**
- Eligible size: 0.25 kWe – 5 kWe
- Grant value per system: **€5,700 – €28,000**



Belgique

Flandres:

- Certificats verts remplacés pour la cogénération en dessous de 10kWe à partir du 1 janvier 2018
- Soutien à l'investissement:
 - Energies conventionnelles: Subside limité à maximum 30% des coûts d'investments
 - Biogaz: Subside limité à maximum:
 - 65% small enterprises
 - 55% medium enterprises
 - 45% large enterprises

